

# ACCESSORIES



**19"GERMANY**  
EXPORT RACK

## G7-05112



- Thermostat Panel Set
- Adjust Temp.Range : 0°C to 80°C
- Can use for controlling the ventilating fan
- Power Cord 3 m., Electro Galvanize Steel 1.5 mm.

## G7-09201

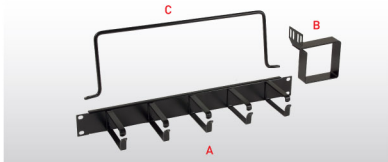


- Lighting Set
- Lamp : 5W
- Input Voltage : 220VAC/50Hz \*Available Black color on request

## G7-06002 (A)

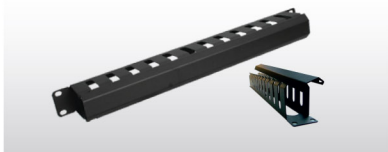
## G7-06004 (B)

## G7-06006 (C)



- Cable Management Panel, 1U (A)
- Vertical Management Ring (B)
- Cable Back Support Bar (C)

## G7-06003



- Cable Management Panel with Cover, 1U
- Electro Galvanize Steel 1.5 mm. Black Color

## G7-0601X

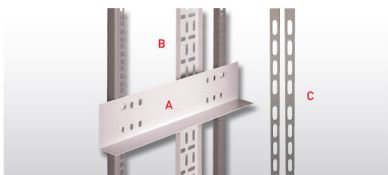


- Blank Panels x U\* { x = 1, 2, 3, 4, 5, 6, 7, 8 }
- \*Available Black color on request

## G7-080XX (A)

## G7-090XX (B)

## G7-060XX (C)

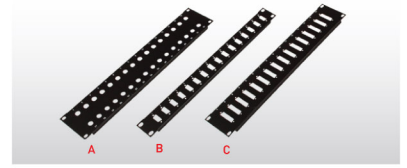


- Cassis Guide Set { 2 Pcs/Set } { xx = Deep = 45, 65, 75, 95 cm.} (A)
- Cable Tray 7.5 cm for Cable Run { xx = U = 15, 27, 36, 39, 42, 45 } (B)
- Vertical Cable Management { xx = U = 42, 45 } (C)

## G7-07014 (A)

## G7-07016 (B)

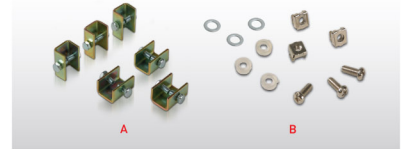
## G7-07018 (C)



- 2U for BNC 32 Port (A)
- 1U for DB9 16 Port (B)
- 2U for DB25 16 Port (C)

## G7-09100 (A)

## G7-09300 (B)



- Baying Kit Set { 6 Pcs/Set } (A)
- Screw M6 + Captive Nut M6 + Plastic Washer Set (B)

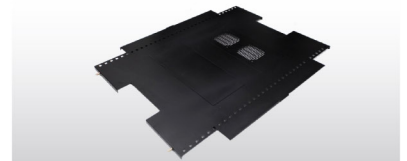
## G7-06005

- Vertical Front Cable Management for IDC Rack G8 Series 2 Pcs/Pkg

## G7-06005SET

- Vertical Front Cable Management for IDC Rack G8 Series 10 Pcs/Pkg

## G7-0XXX0S



- Roof Cover for IDC Rack G8 series
- {xxx = WxL = 60x60, 60x80, 60x90, 60x100, 60x110, 80x100, 80x110 cm.}

## G7-080XX



- Vented Raised Roof Cover

## G7-02099



- Catiliver Support Set for Open Rack G0 Series 2 Pcs/Pkg